

Desso Textile floor covering - Tiles




The Floor is Yours


Pallas

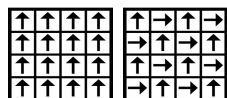
Specification according to EN 1307

Type of manufacture	ISO 2424	Tufted 1/10 "						
Aspect	ISO 2424	Loop pile						
Dye method		Piece dyed continuous						
Dimensions	EN 994	cm x cm	50 x 50 / 19.68" x 19.68" (20 tiles per box)					
Primary backing	ISO 2424	Polyester - polyamide fleece						
Secondary backing	ISO 2424	Modified bitumen Polyver® - Polyscan®						
Pile fibre composition	ISO 2424	BCF Polyamide 6.6						
Total thickness	ISO 1765	mm	7.0	inch	0.28			
Effective pile thickness	ISO 1766	mm	4.0	inch	0.16			
Total mass	ISO 8543	g/m ²	4200	oz/yd ²	124.0			
Total pile mass	ISO 2424	g/m ²	660	oz/yd ²	19.5			
Effective pile mass	ISO 8543	g/m ²	430	oz/yd ²	12.7			
Pile density	ISO 8543	g/cm ³	0.108	lb/in ³	0.0039			
Number of tufts	ISO 1763	/dm ²	950	/yd ²	79430			
Stroll test	ISO 6356	kV	≤ 2.0					
Vertical resistance	ISO 10965	Ohm	≤ 1 x 10 ⁹					
Horizontal resistance	ISO 10965	Ohm	≤ 1 x 10 ⁹					
Classification for use	EN 1307	33 Commercial - heavy use						
Luxury rating	EN 1307	LC 2						
Dimensional stability	EN 986	%	≤ 0.20					
Sound absorption	ISO 354	Freq. Hz	125	250	500	1000	2000	4000
			α _s	0.02	0.05	0.11	0.28	0.33
Noise reduction	ISO 354	α _w	0.19					
Thermal resistance	ISO 8302	m ² .K/W	0.089					
Flammability	EN 13501-1	Bfl - s1						
Prodis-ID	www.pro-dis.info	22CE445F						


 EN 14041
 0493-CPD-0002

Manufactured by:
 Desso BV
 PO Box 169
 NL - 5140 AD Waalwijk



Desso flooring products are to be installed in full accordance with Desso's installation instructions and recognised trade standards. An effective, regular cleaning and maintenance programme is vital for retaining a high appearance level. Desso flooring products should only be used as floorcoverings. Note: Desso reserves the right to amend this specification without giving prior notice. For the latest versions of the technical specifications, check our internet site: www.desso.com



08-02-2010 UK